

INSTALLATION AND USER MANUAL

Pure.Sink

Stainless Steel Sinks



Undermount

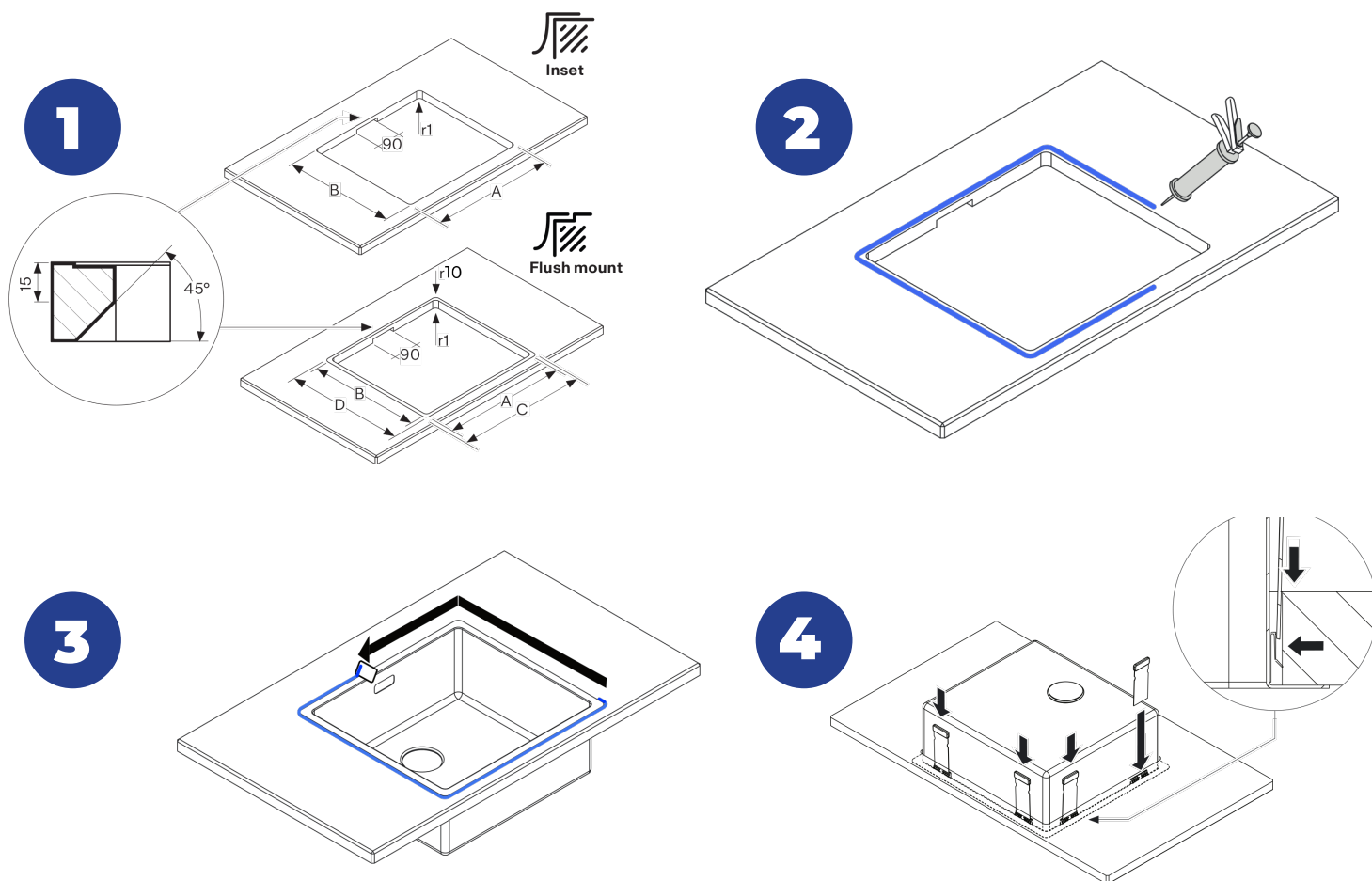


Inset



Flush mount

Inset and flush mount



1

Cut out in the worktop according to the sizes of the included template and cut out in the lower section of the worktop according to the sizes of the sinks for flush mount.

2

Clean the worktop and the rim of the sink with a degreaser.

3

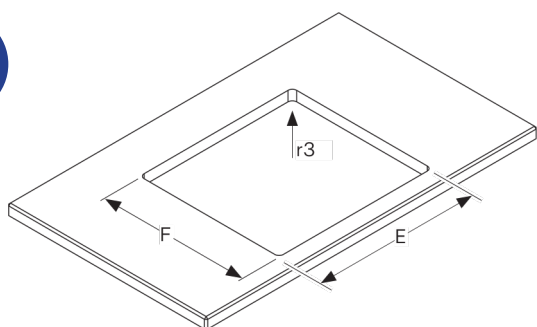
Cleal the edges of any silicone or glue.

4

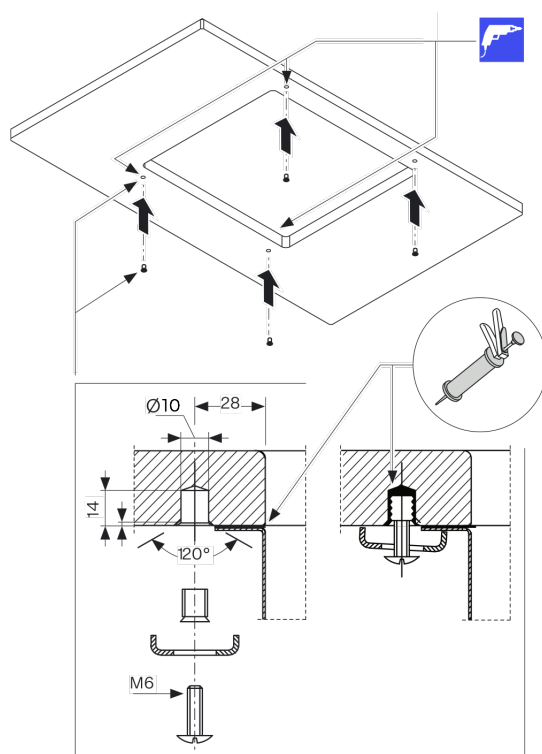
Fix the clips.

Undermount

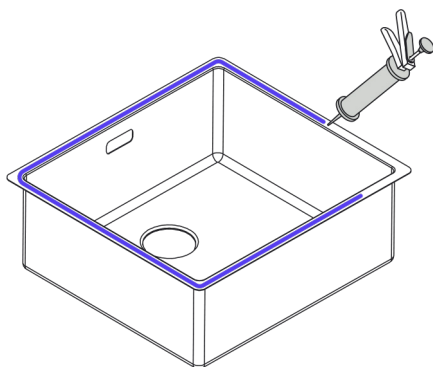
1



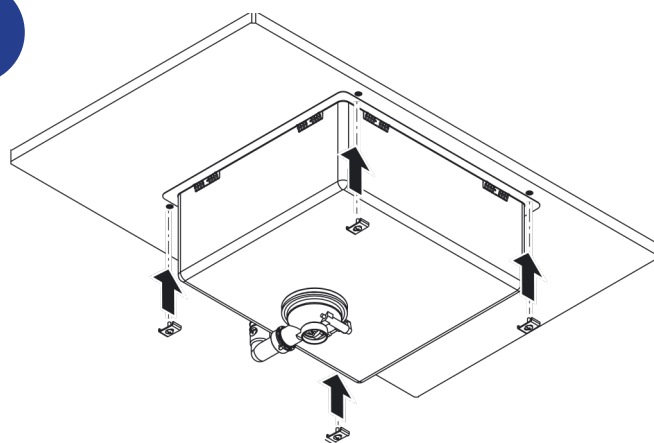
2



3



4



1

Cut out in the worktop according to the sizes of the template. Clean the worktop and the rim of the sink with a degreaser.

2

Drill small holes for the fixing clips.

3

Next, apply the silicone sealant or glue to the rim of the sink and place it below the worktop.

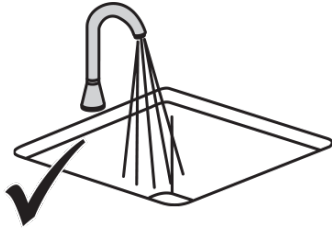
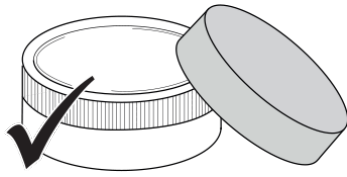
4

Fix the clips.

Pure.Sink

MAINTENANCE

dos and don'ts



Warning: If any rust is visible on the exterior of the sink, it is likely due to external factors. Possible causes include:



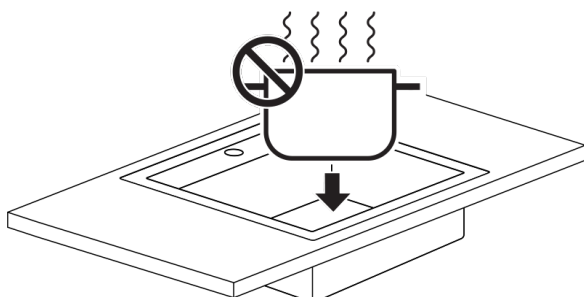
The use of strong chemicals or aggressive detergents that have compromised the protective coating of the stainless steel.

Residue from tiles and construction materials if these were ground during the kitchen installation while the sink was uncovered. This residue can often include steel from the grinding equipment and will rust when exposed to water.

Iron particles from a pan or other steel objects that have been placed in the sink. These particles will rust upon contact with water.



Solution: To remove rust spots, first eliminate any iron particles, then moisten the sink, and use Inox Care products along with a soft, damp cloth to polish the affected areas.



Pure.Sink

Contact Info

PureSink LTD



info@puresink.eu



+359 (0)882 500 776



www.puresink.eu



**28 "Mois Levi" Str.
9000 Varna
Bulgaria**